

EMSCULPT neo[®]

The
one

**inBody
Shaping**

LESS

Fat

Muscle

MORE

The First of Its Kind

EMSCULPT NEO is considered a breakthrough in non-invasive body shaping. This revolutionary procedure simultaneously delivers heat and magnetic energy resulting in **more fat reduction and more muscle growth** compared to any single gold standard product.

MORE
for
LESS

BEFORE



AFTER **EMSCULPT®**



1 MONTH AFTER THE LAST TREATMENT, COURTESY OF: BTL AESTHETICS

BEFORE



AFTER **EMSCULPT®**



3 MONTHS AFTER THE LAST TREATMENT, COURTESY OF: DAVID KENT, M.D.

BEFORE



AFTER **EMSCULPT®**



3 MONTHS AFTER THE LAST TREATMENT, COURTESY OF: BRUCE E. KATZ, M.D.

BEFORE



AFTER **EMSCULPT®**



1 MONTH AFTER THE LAST TREATMENT, COURTESY OF: DAVID KENT, M.D.

RF & HIFEM+
for Fat & Muscle

+25%
Muscle
on average* **MORE**

LESS **-30%**
Fat
on average*

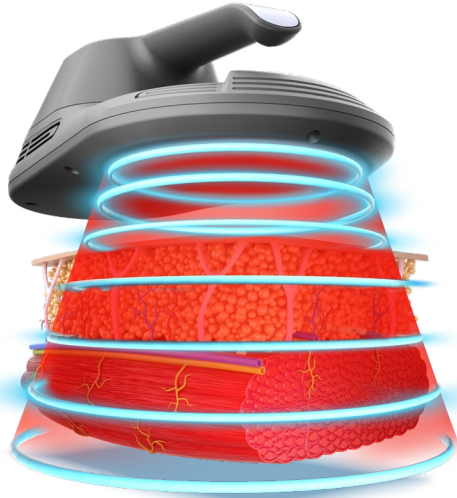
**COMBINED 30-MIN.
TREATMENT**

The data shown represent the average results of 3 EMSCULPT NEO's clinical studies*. Results and patient experience may vary.

How It Works

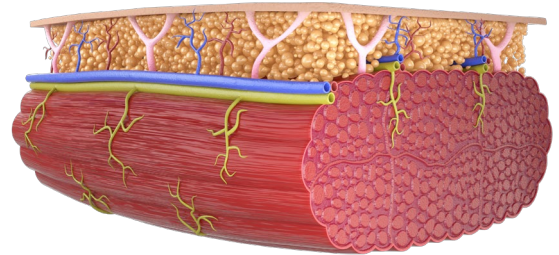
EMSCULPT NEO is the world's first and only technology that uses **Radiofrequency and HIFEM+** (high intensity focused electromagnetic field) to **eliminate fat and build muscles non-invasively.**

30
minutes



LESS **-30%**
Fat

on average*



+25% **MORE**
Muscle

on average*

RF

HIFEM+

Results and patient experience may vary.

The data shown represent the average results of 3 EMSculpt NEO's clinical studies.*

Fat Breakdown

In less than 4 minutes the **temperature in fat reaches** levels that cause their **permanent damage.**

Muscle Warm-Up

The muscle **temperature raises** by several degrees, **similar to what a warm-up activity does before any workout.**

Supramaximal Contraction

Muscles in the treated area **are contracted at intensities** that are **not achievable during routine exercise.**

After Treatment

The **fat cells are slowly removed** from the body and the strained **muscle fibers initiate a growth process.** This results in **fat elimination and muscle building.**

More Applicators & Body Parts

Emsculpt NEO individually tailored treatments can help you **eliminate fat and build muscles on various body parts.**

Walk-in
Walk-out



30
minutes
Fat & Muscle
Non-invasive



Abdomen

Buttocks

Inner Thighs

Outer Thighs

Front Thighs

Back Thighs

Biceps

Triceps

Calves



No Downtime
No Anesthesia

Two Therapies in
a Single Treatment



2 for 1

PATIENTS UP TO BMI 35

More Lift
Less Time

EMSCULPT
neo®

More Definition
Less Commitment



BEFORE



AFTER EMSCULPT®



1 MONTH AFTER THE LAST TREATMENT, COURTESY OF: DAVID KENT, M.D.

BEFORE



AFTER EMSCULPT®



3 MONTHS AFTER THE LAST TREATMENT, COURTESY OF: JULENE SAMUELS, M.D.

BEFORE



AFTER EMSCULPT®



6 MONTHS AFTER THE LAST TREATMENT, COURTESY OF: DAVID KENT, M.D.

BEFORE



AFTER EMSCULPT®



6 MONTHS AFTER THE LAST TREATMENT, COURTESY OF: JULENE SAMUELS, M.D.

BEFORE

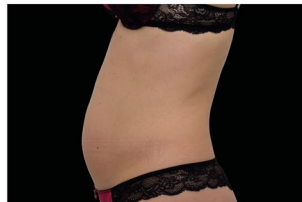


AFTER EMSCULPT®

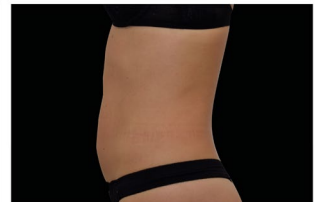


3 MONTHS AFTER THE LAST TREATMENT, COURTESY OF: BTL AESTHETICS

BEFORE



AFTER EMSCULPT®



1 MONTH AFTER THE LAST TREATMENT, COURTESY OF: BRUCE E. KATZ, M.D.

BEFORE

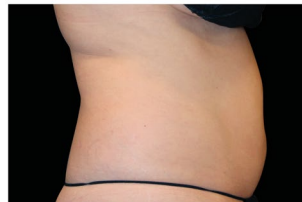


AFTER EMSCULPT®

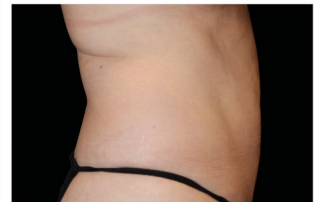


1 MONTH AFTER THE LAST TREATMENT, COURTESY OF: DAVID KENT, M.D.

BEFORE



AFTER EMSCULPT®



6 MONTHS AFTER THE LAST TREATMENT, COURTESY OF: JULENE SAMUELS, M.D.

More Lift
Less Time

EMSCULPT
neo®

More Definition
Less Commitment



BEFORE

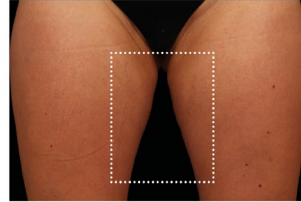


AFTER EMSCULPT®

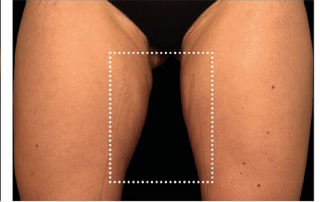


IMMEDIATELY AFTER THE LAST TREATMENT, COURTESY OF: KLAUS HOFFMANN, M.D.

BEFORE



AFTER EMSCULPT®



1 MONTH AFTER THE LAST TREATMENT, COURTESY OF: DIANE DUNCAN, M.D.

BEFORE

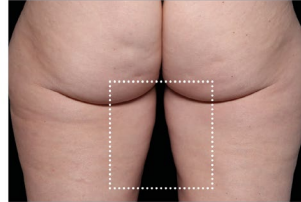


AFTER EMSCULPT®

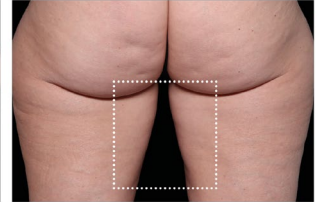


1 MONTH AFTER THE LAST TREATMENT, COURTESY OF: BTL AESTHETICS

BEFORE



AFTER EMSCULPT®



IMMEDIATELY AFTER THE LAST TREATMENT, COURTESY OF: DIANE DUNCAN, M.D.

BEFORE



AFTER EMSCULPT®



IMMEDIATELY AFTER THE LAST TREATMENT, COURTESY OF: MELANIE PALM, M.D.

BEFORE



AFTER EMSCULPT®



4 WEEKS AFTER THE LAST TREATMENT, COURTESY OF: RAMINDER SALUJA, M.D.

BEFORE



AFTER EMSCULPT®



1 MONTH AFTER THE LAST TREATMENT, COURTESY OF: Yael HALAAS, M.D.

BEFORE



AFTER EMSCULPT®



4 WEEKS AFTER THE LAST TREATMENT, COURTESY OF: RAMINDER SALUJA, M.D.



After the **age of 30**, one loses roughly **3% to 5% of one's muscle mass** per decade.*

Weak muscles and lack of exercise leads to **strength, balance, posture and discomfort** issues.

- 1 66% of women with **abdominal separation** have **pelvic floor disorders**.*
- 2 Every **11 seconds** an older adult is treated in the **emergency room** for losing balance and falling.*

Core to floor therapy utilizes **two HIFEM procedures** to **strengthen, firm and tone the abdomen and pelvic floor muscles**.

The result is increased **muscle growth and restoration of neuromuscular control**, which can improve strength, balance, posture, and incontinence as well as potentially **alleviate back discomfort**.

The Whole Core Work Out

25%

Average Increase in Muscle Mass*

95%

Average Patient Satisfaction*

“I was pleasantly surprised how much stronger I felt with Core to Floor Therapy and my incontinence improved as well.”

Jenny, Dallas, TX

Backed by Science

7*

New Clinical Studies

EMSCULPT NEO showed consistency in eliminating fat and/or building muscle in all latest clinical studies.

30*

Scientific Publications

More than 30 scientific publications since 2018 make HIFEM the most intensively researched technology used in non-invasive body shaping.

EMSCULPT
neo®

Frequently Asked Questions

Why is Emsculpt NEO the ONE in body shaping?

EMSCULPT NEO is the first procedure to provide simultaneous fat elimination and muscle building in a combined 30-minute session.

Am I a candidate?

Everybody can benefit from more muscles and less fat. Ask your provider if the treatment is suitable for you.

What is the treatment time?

Four 30-minute treatments scheduled once a week are recommended. Your provider will help you create a treatment plan tailored to your specific goals.

Is there any downtime?

Any pre/post-treatment preparation?

EMSCULPT NEO is a non-invasive procedure that requires no recovery time or any pre-treatment preparation.

What does it feel like?

EMSCULPT NEO procedure feels like an intense workout with a warming sensation in the treated area. You can lay down and relax during the treatment.

Does it really work?

YES! EMSCULPT NEO showed consistency in eliminating fat and/or building muscle in seven latest clinical studies. Moreover, 30 scientific publications make HIFEM the most intensively researched body contouring technology since its introduction in 2018.

How fast will I see results?

You begin to feel tangible results right after the treatments. Positive results are usually reported two to four weeks after the last session and continue to improve for several weeks following treatment.

EMSCULPT neo®



Ask Your
Provider
Today!



EMSCULPTNEO.COM
#EMSCULPT



Results and patient experience may vary. As with any medical procedure, ask your doctor if the EMSCULPT NEO® procedure is right for you. EMSCULPT NEO® is intended for non-invasive lipolysis (breakdown of fat) of the abdomen and thighs and reduction in circumference of the abdomen and thighs with Skin Type I to Skin Type VI. EMSCULPT NEO® is also cleared for improvement of abdominal tone, strengthening of the abdominal muscles and development of firmer abdomen. Strengthening, toning, firming of buttocks, thighs, and calves. Improvement of muscle tone and firmness, for strengthening muscles in arms. BTL Emsella® is intended to provide entirely non-invasive electromagnetic stimulation of pelvic floor musculature for the purpose of rehabilitation of weak pelvic muscles and restoration of neuromuscular control for the treatment of male and female urinary incontinence. EMTONE is intended to provide heating for the purpose of elevating tissue temperature for selected medical conditions such as temporary relief of pain, muscle spasms, and increase in local circulation. EMTONE massage device is intended to provide a temporary reduction in the appearance of cellulite. ©2022 BTL Group of Companies. All rights reserved. BTL®, EMSCULPT NEO® and EMSCULPT® are registered trademarks in the United States of America, the European Union, or other countries. The products, the methods of manufacture or the use may be subject to one or more U.S. or foreign patents or pending applications. Trademarks EMSCULPT®, EMSCULPT NEO®, Emsella®, EMTONE®, EMBODY®, and HIFEM® are parts of EM™ Family of products. *Data on file.

899-75EMCNFMABENUS100; Emsculpt_Neo_BR_FMAB_ENUS100